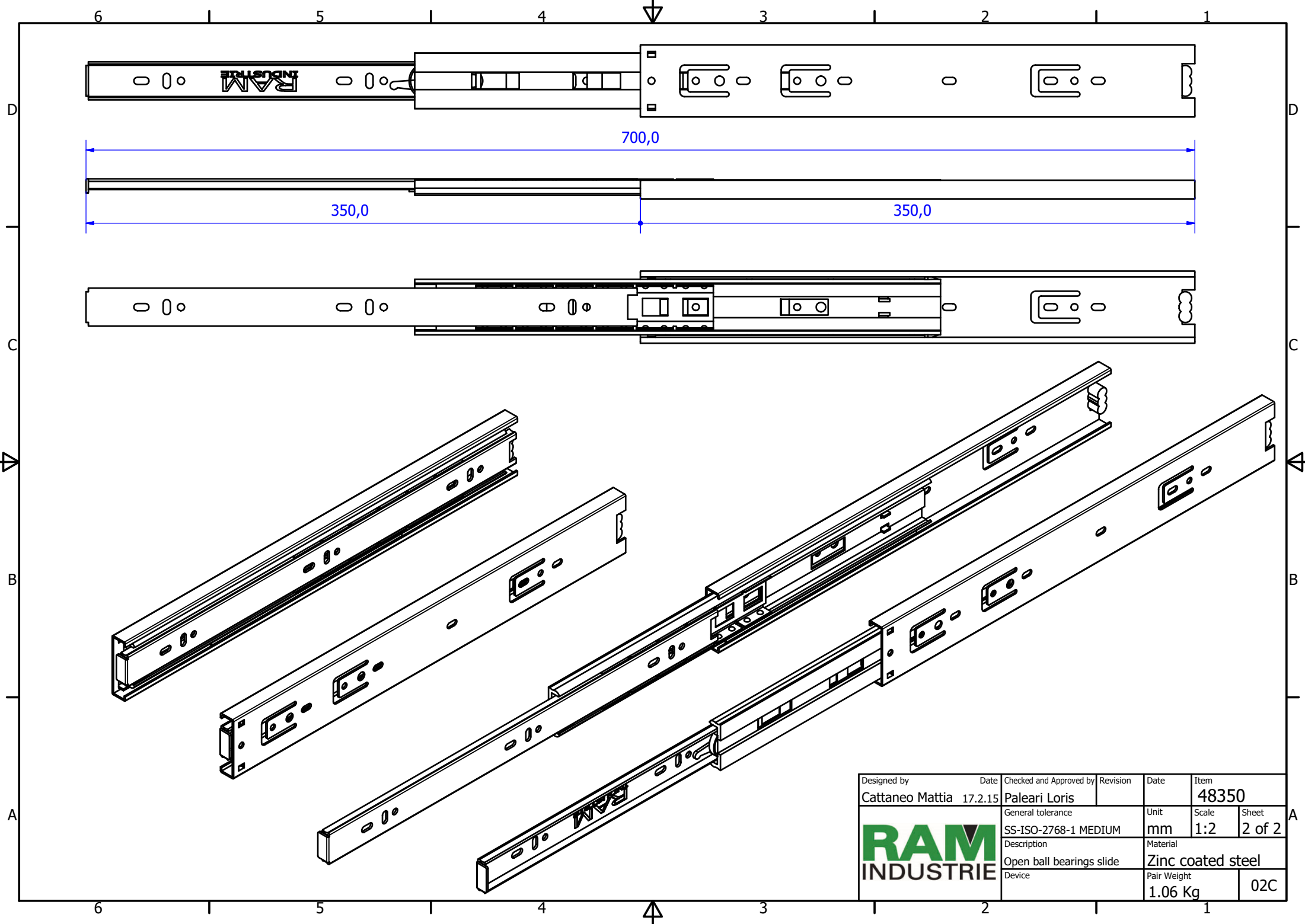


Designed by	Date	Checked and Approved by	Revision	Date	Item
Cattaneo Mattia	17.2.15	Paleari Loris			48350
General tolerance			Unit	Scale	Sheet
SS-ISO-2768-1 MEDIUM			mm	1:1.25	1 of 2
Description			Material		
Closed ball bearings slide			Zinc coated steel		
Device			Pair Weight		
			1.06 Kg	02C	

CRONOLOGIA REVISIONI		
REV	DATA	APPROVATO
1	19/11/2024	

RAM
INDUSTRIE



Designed by	Date	Checked and Approved by	Revision	Date	Item
Cattaneo Mattia	17.2.15	Paleari Loris			48350
General tolerance			Unit	Scale	Sheet
SS-ISO-2768-1 MEDIUM			mm	1:2	2 of 2
Description			Material		
Open ball bearings slide			Zinc coated steel		
Device			Pair Weight		
			1.06 Kg	02C	