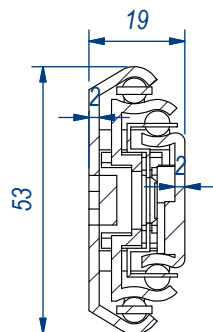
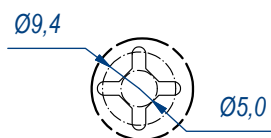


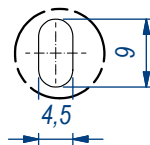
SEZ. A-A



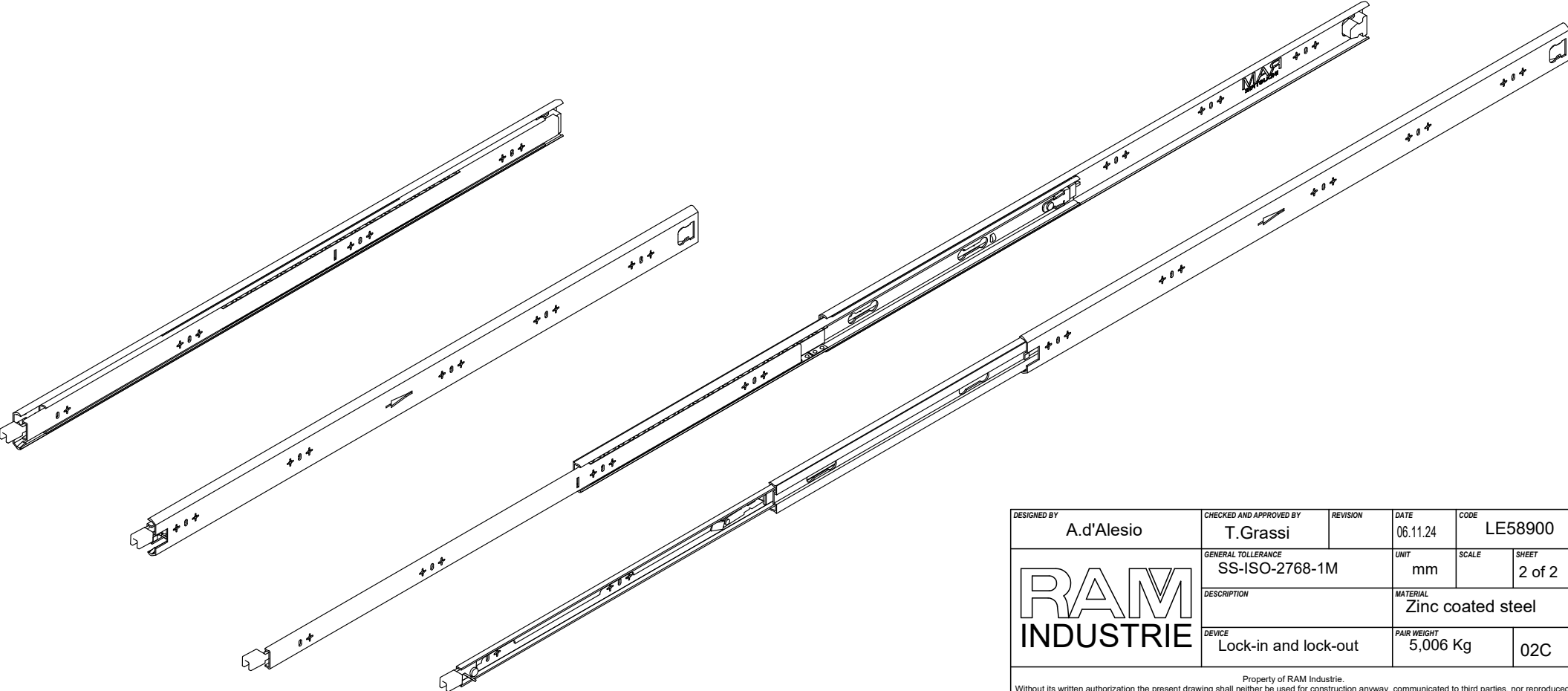
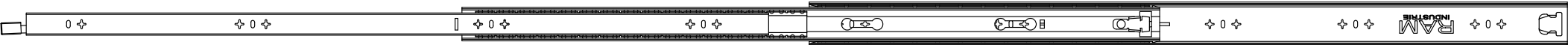
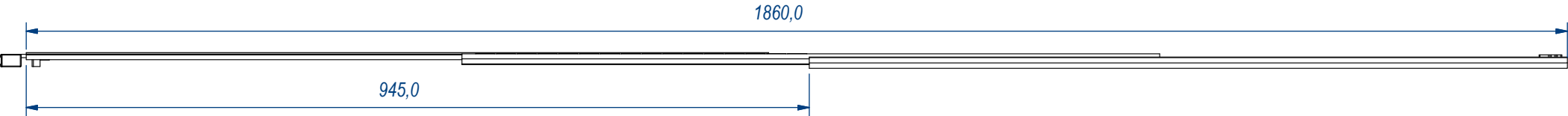
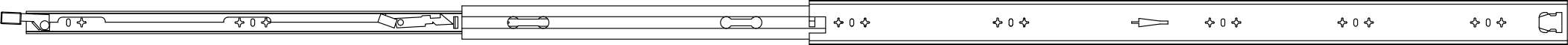
B (1:1)



C (1:1)



DESIGNED BY <b>A.d'Alesio</b>	CHECKED AND APPROVED BY <b>T.Grassi</b>	REVISION	DATE 06.11.24	CODE LE58900
<b>RAM INDUSTRIE</b>		GENERAL TOLLERANCE SS-ISO-2768-1M	UNIT mm	SCALE 1 of 2
		DESCRIPTION Lock-in and lock-out	MATERIAL Zinc coated steel	PAIR WEIGHT 5,006 Kg
Without its written authorization the present drawing shall neither be used for construction anyway, communicated to third parties, nor reproduced.			02C	



DESIGNED BY A.d'Alesio	CHECKED AND APPROVED BY T.Grassi	REVISION	DATE 06.11.24	CODE LE58900
RAM INDUSTRIE	GENERAL TOLLERANCE SS-ISO-2768-1M	UNIT mm		SCALE 2 of 2
	DESCRIPTION	MATERIAL Zinc coated steel		
	DEVICE Lock-in and lock-out	PAIR WEIGHT 5,006 Kg		02C

Property of RAM Industrie.  
Without its written authorization the present drawing shall neither be used for construction anyway, communicated to third parties, nor reproduced.