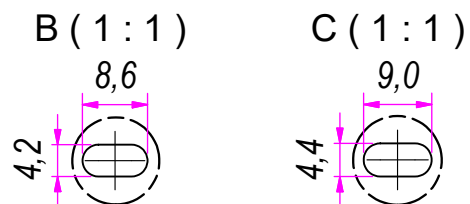

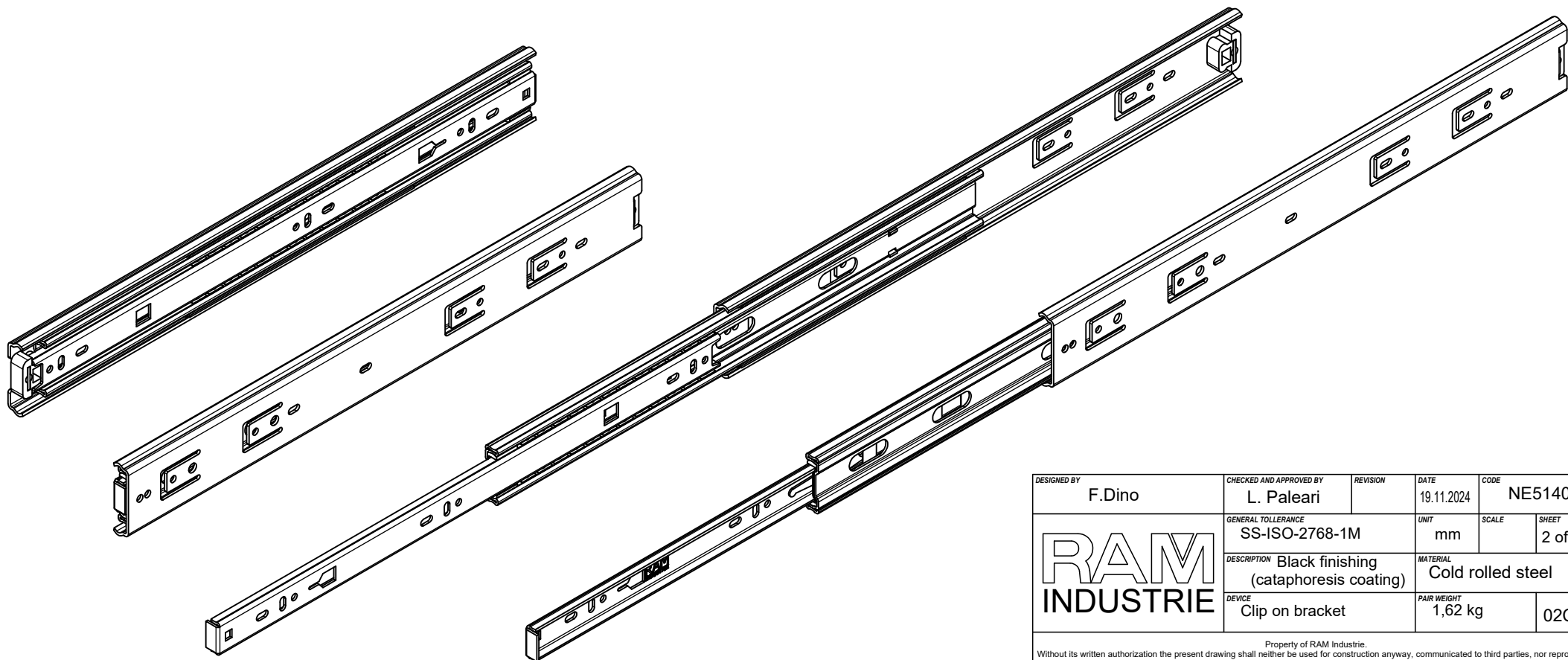
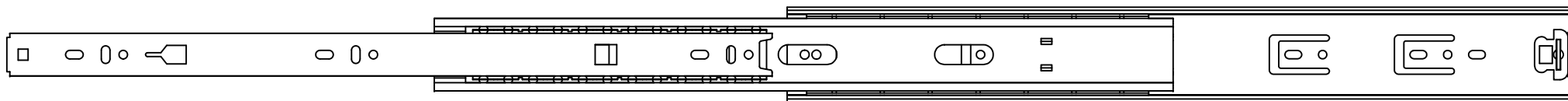
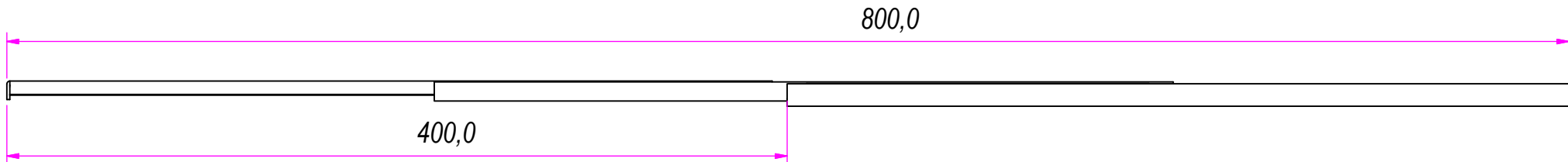
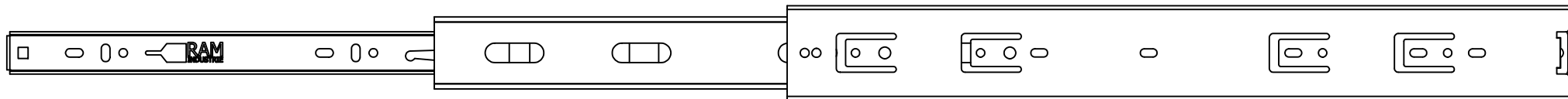


Technical drawing of a metal component with the following dimensions:

- Overall length: 50,0
- Overall diameter: 12,7
- Internal diameter (top): 1,8
- Internal diameter (middle): 1,5
- Internal diameter (bottom): 1,5



DESIGNED BY <b>F.Dino</b>	CHECKED AND APPROVED BY <b>L. Paleari</b>	REVISION	DATE <b>19.11.2024</b>	CODE <b>NE51400</b>	
	GENERAL TOLERANCE <b>SS-ISO-2768-1M</b>		UNIT <b>mm</b>	SCALE	SHEET <b>1 of 2</b>
	DESCRIPTION <b>Black finishing (cataphoresis coating)</b>		MATERIAL <b>Cold rolled steel</b>		
	DEVICE <b>Clip on bracket</b>		PAIR WEIGHT <b>1,62 Kg</b>		<b>02C</b>
<p style="text-align: center;">Property of RAM Industrie.</p> <p>Without its written authorization the present drawing shall neither be used for construction anyway, communicated to third parties, nor reproduced.</p>					



DESIGNED BY F.Dino	CHECKED AND APPROVED BY L. Paleari	REVISION	DATE 19.11.2024	CODE NE51400	
RAM INDUSTRIE	GENERAL TOLLERANCE SS-ISO-2768-1M		UNIT mm	SCALE	SHEET 2 of 2
	DESCRIPTION Black finishing (cataphoresis coating)		MATERIAL Cold rolled steel		
	DEVICE Clip on bracket		PAIR WEIGHT 1,62 kg		02C
	Property of RAM Industrie.				
Without its written authorization the present drawing shall neither be used for construction anyway, communicated to third parties, nor reproduced.					