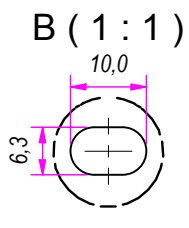
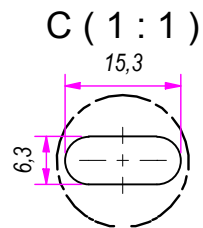
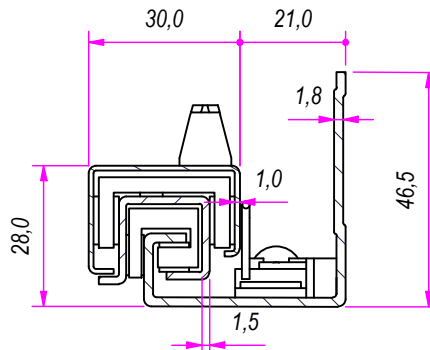


SEZ. A-A

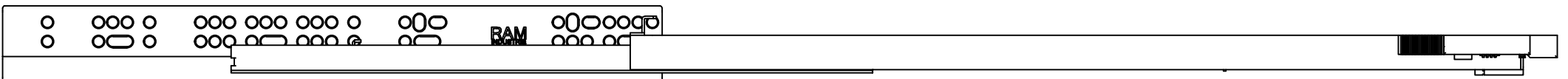
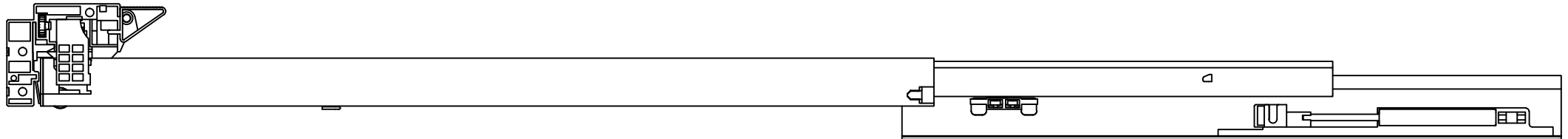
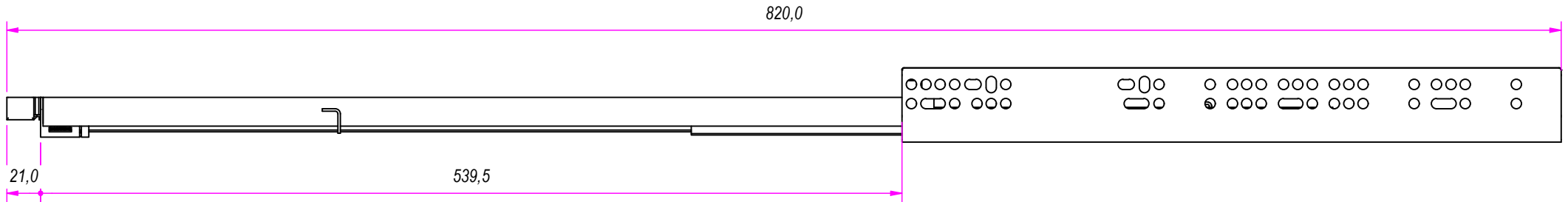
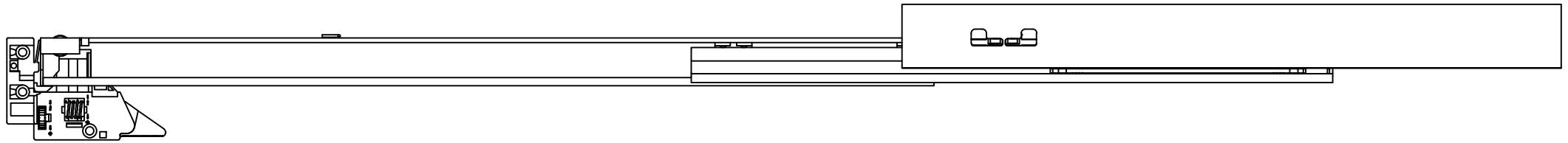


DESIGNED BY F. Dino	CHECKED AND APPROVED BY L. Paleari	GENERAL TOLERANCE SS-ISO-2768-1M	DATE 19/07/2019	CODE Q24600
PACKAGING Carton 10 sets/Packed R+L			UNIT mm	SHEET 1 of 3
DESCRIPTION 3 adjustment handle			MATERIAL Cold rolled steel	04C
DEVICE Soft self closing/Oil piston			PAIR WEIGHT	PAIR WEIGHT WITH CARTON 2,296 Kg

RAM
INDUSTRIE

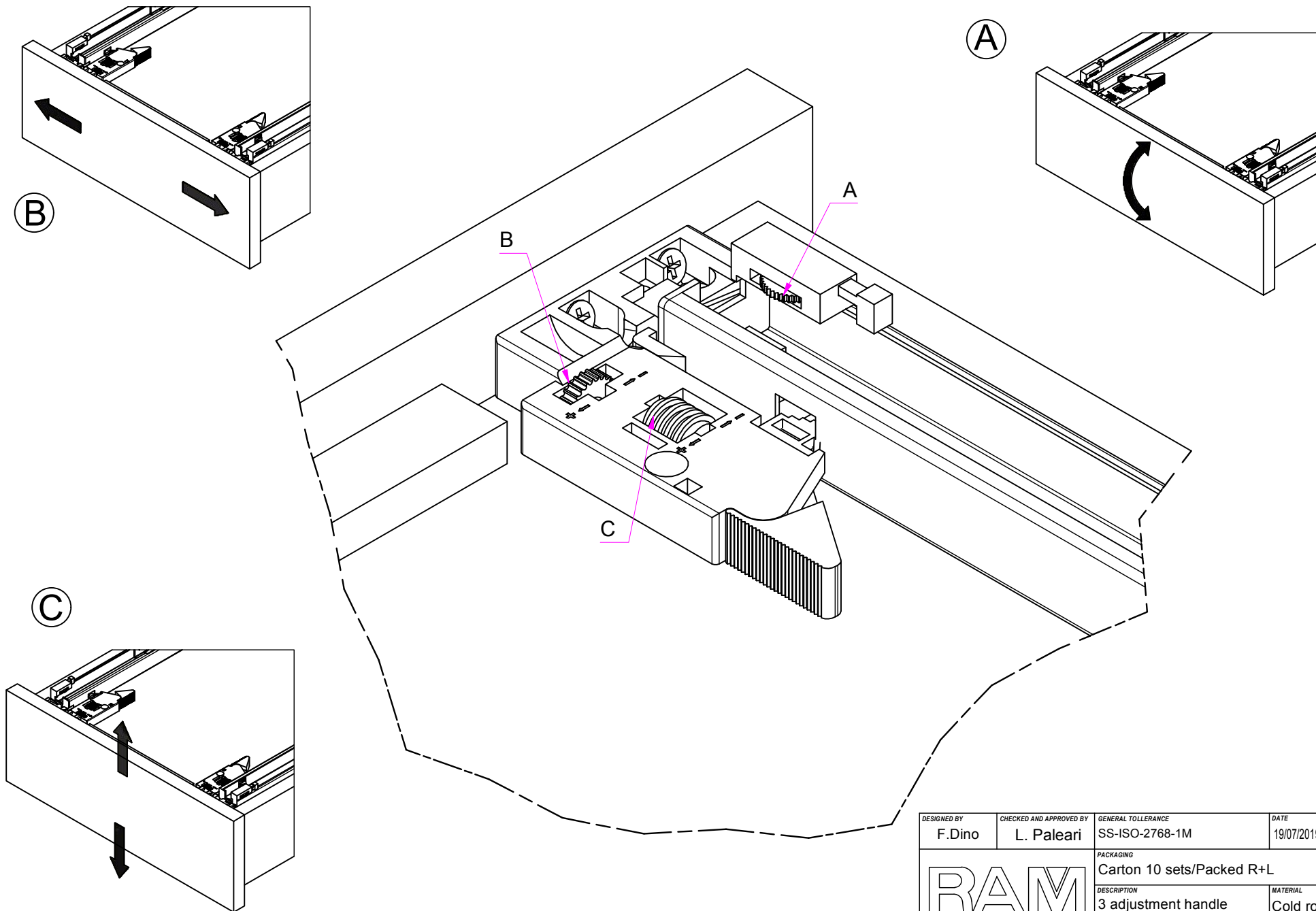
GUIDE PER CASSETTI; GUIDE TELESCOPICHE		COULISSES À BILLES; COULISSE TÉLESCOPIQUE		REVISION HISTORY	
DRAWER SLIDE; TELESCOPIC BALL BEARING SLIDE		GUÍAS PARA CAJONES; GUÍA TELEÓPICA		REV	DESCRIPTION
KUGELFÜHRUNG; TELESKOPSCIENEN				DATE	
				1a	19/07/2019

Property of RAM Industrie.
Without its written authorization the present drawing shall neither be used for construction anyway, communicated to third parties, nor reproduced.



Guide per cassetti; guide telescopiche	Coulisses à billes; coulisse télescopique	REVISION HISTORY	
Drawer slide; telescopic ball bearing slide	Guías para cajones; guía teleópica	REV	DESCRIPTION
Kugelführung; Teleskopschienen		1a	19/07/2019

DESIGNED BY F.Dino	CHECKED AND APPROVED BY L. Paleari	GENERAL TOLLERANCE SS-ISO-2768-1M	DATE 19/07/2019	CODE Q24600
		PACKAGING Carton 10 sets/Packed R+L	UNIT mm	SHEET 2 of 3
		DESCRIPTION 3 adjustment handle	MATERIAL Cold rolled steel	04C
		DEVICE Soft self closing/Oil piston	PAIR WEIGHT	PAIR WEIGHT WITH CARTON 2,296 Kg
Property of RAM Industrie.				
Without its written authorization the present drawing shall neither be used for construction anyway, communicated to third parties, nor reproduced.				



DESIGNED BY F.Dino	CHECKED AND APPROVED BY L. Paleari	GENERAL TOLERANCE SS-ISO-2768-1M	DATE 19/07/2019	CODE Q24600
		PACKAGING Carton 10 sets/Packed R+L	UNIT mm	SHEET 3 of 3
		DESCRIPTION 3 adjustment handle	MATERIAL Cold rolled steel	04C
DEVICE Soft self closing/Oil piston		PAIR WEIGHT	PAIR WEIGHT WITH CARTON	

Property of RAM Industrie.
Without its written authorization the present drawing shall neither be used for construction anyway, communicated to third parties, nor reproduced.